

Total you'll need to remove about 39 screws. The 1186 is a little bit different I think so take pictures of everything you do!

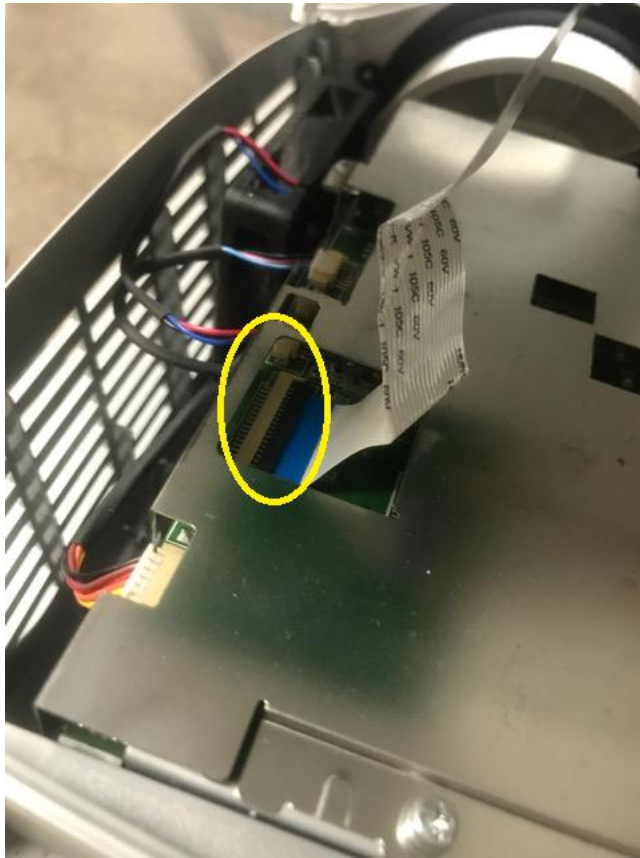
First remove all the bottom screws:



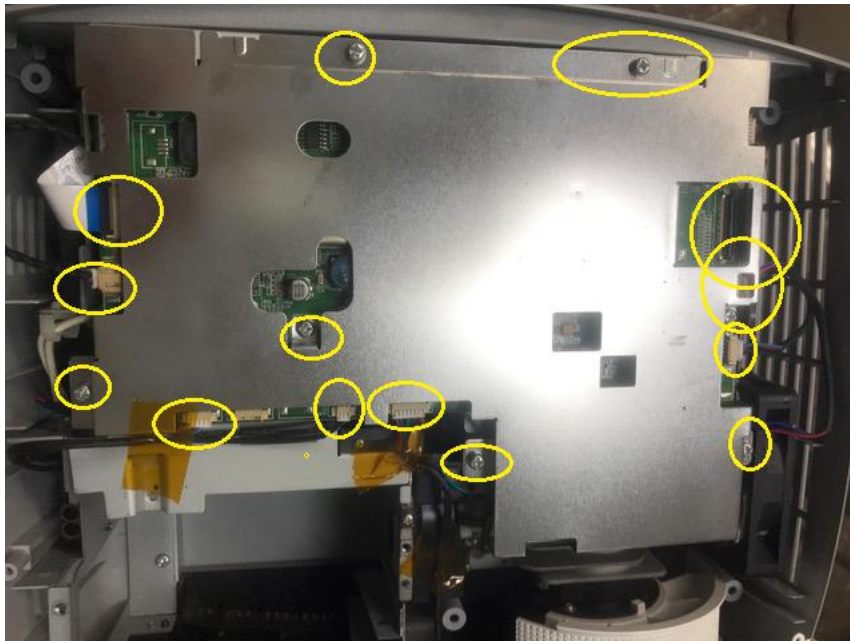
Remove the 4 back screws holding the connectors:



Remove the top. Do not lift too high as you need to disconnect the ribbon cable inside. Lift up gently on the black tab and slide out the ribbon:



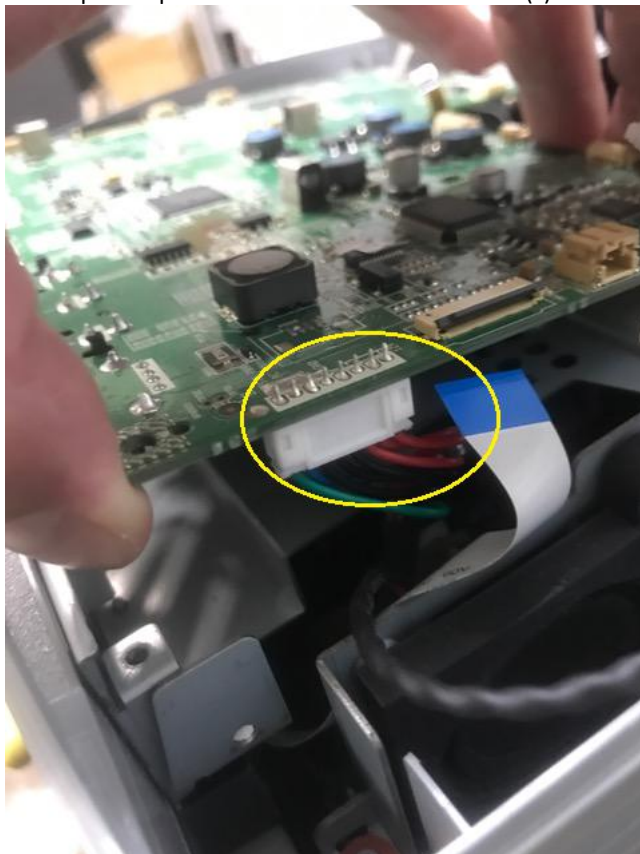
Unplug the connectors. Remove the screws from the metal cover:



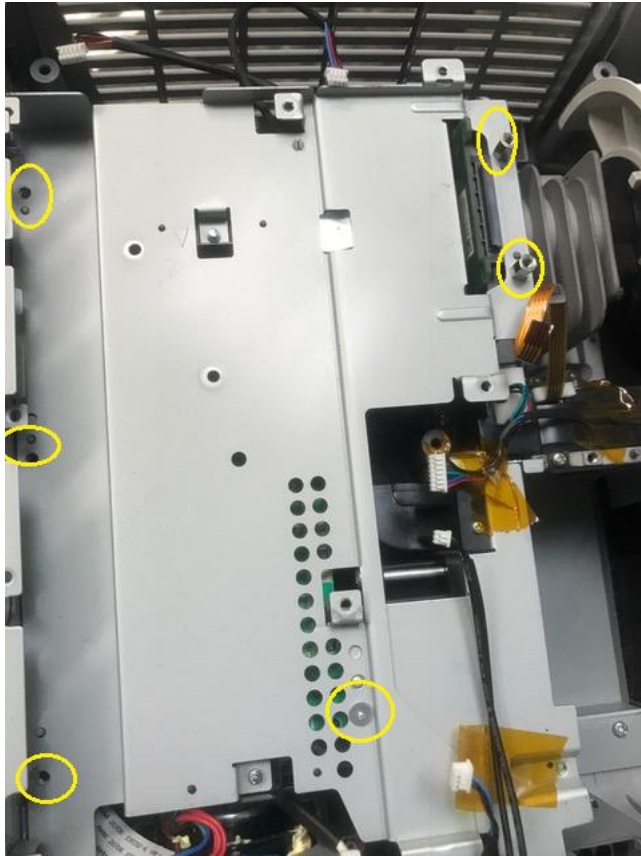
Remove the PCB screws:



Lift it up a couple cm and remove the connector(s):

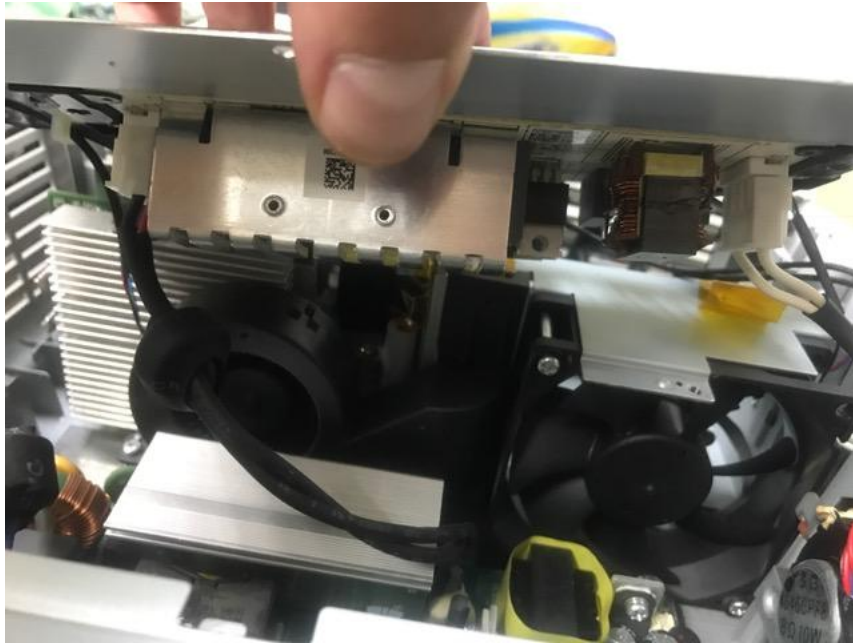


Remove the screws for the second metal cover:

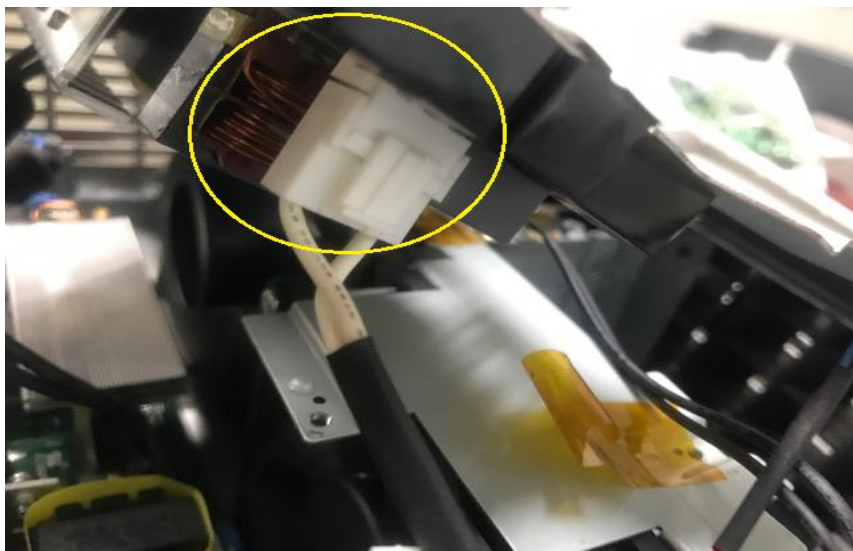


Pull the back of the projector out a few mm gently so the metal cover can clear the back and lift up on the metal cover:





Remove all the connectors:



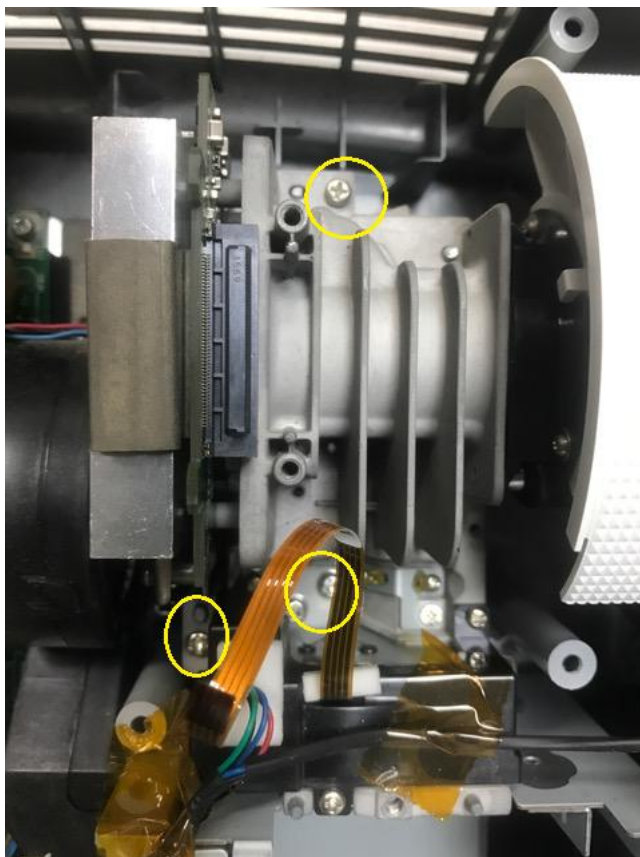
Remove the wire clip:



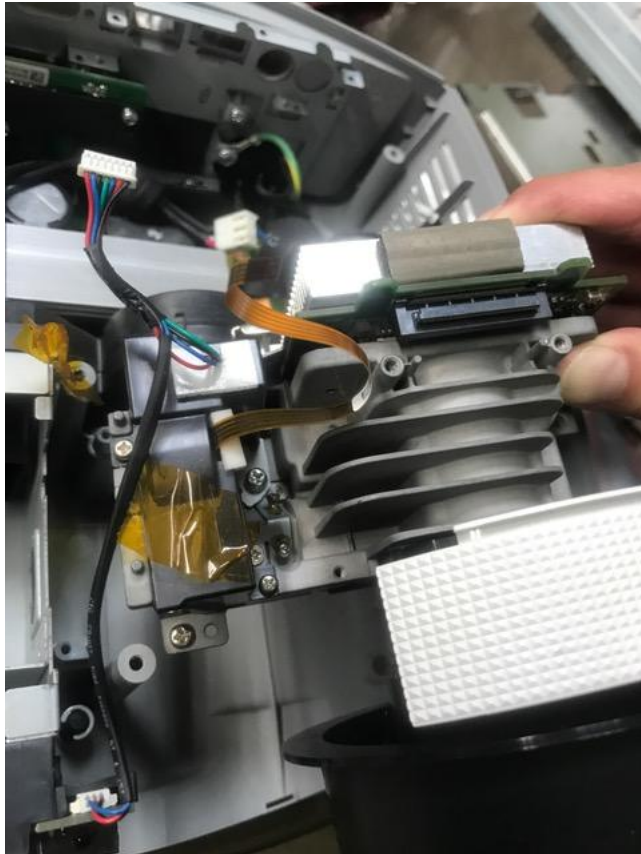
Remove the front cover:



Remove the optical engine screws:



Lift it out gently:



Then you can access the filter screws:

